



Enroll in a plan or renew your health coverage soon.

*Open enrollment dates are November 1 - January 31**

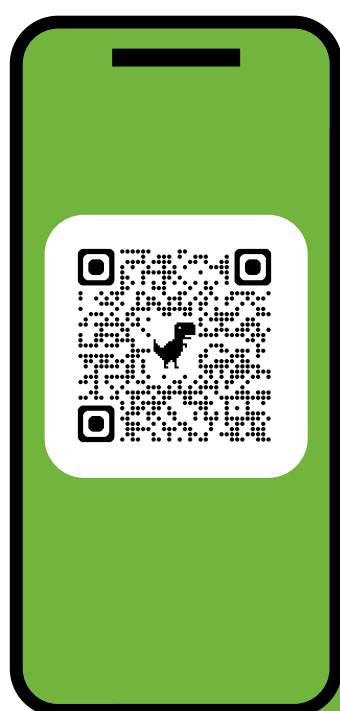
OPEN ENROLLMENT IS JUST AROUND THE CORNER.

Are you ready?

We can help.



1-855-250-7748



**SCAN
ME!**

**Please note that November 1st through the 15th is for new consumers who need coverage effective December 1, 2024. Qualified Health Plan Enrollees cannot renew until November 16th.*


LEGAL ASSISTANCE OF WESTERN NEW YORK, INC.*


The Official Health Plan Marketplace